

Dukakis Notes based on 2006 ACTF

Piano Garage: 12 feet deep, 6.5 feet wide

Height of Proscenium: 20'

Height of Grid: 42'

Approximately 18 unused smaller weights: around 25 lbs

Approx 40 larger weights, around 50lbs

Clouds:

First: 5' from top to bottom; 40' across

2nd and 3rd: 7' top to bottom; 40' across

Scrim and Silk are 24' x 54'; scrim has holes in it

Number of Available Headsets : 5

Borderlights

Category number R40

120 watt flood lamps that screw in

Gel slot is 6.5" x 6"

Red, Green and Blue glass gels

Twistlock in

Ellipsoidal

Category Number 1KL6-40

Holds gobo size 1B

750w

Twistlock in

Par 64

WFL

1000w

Twistlock in

Spotlights go to Edison

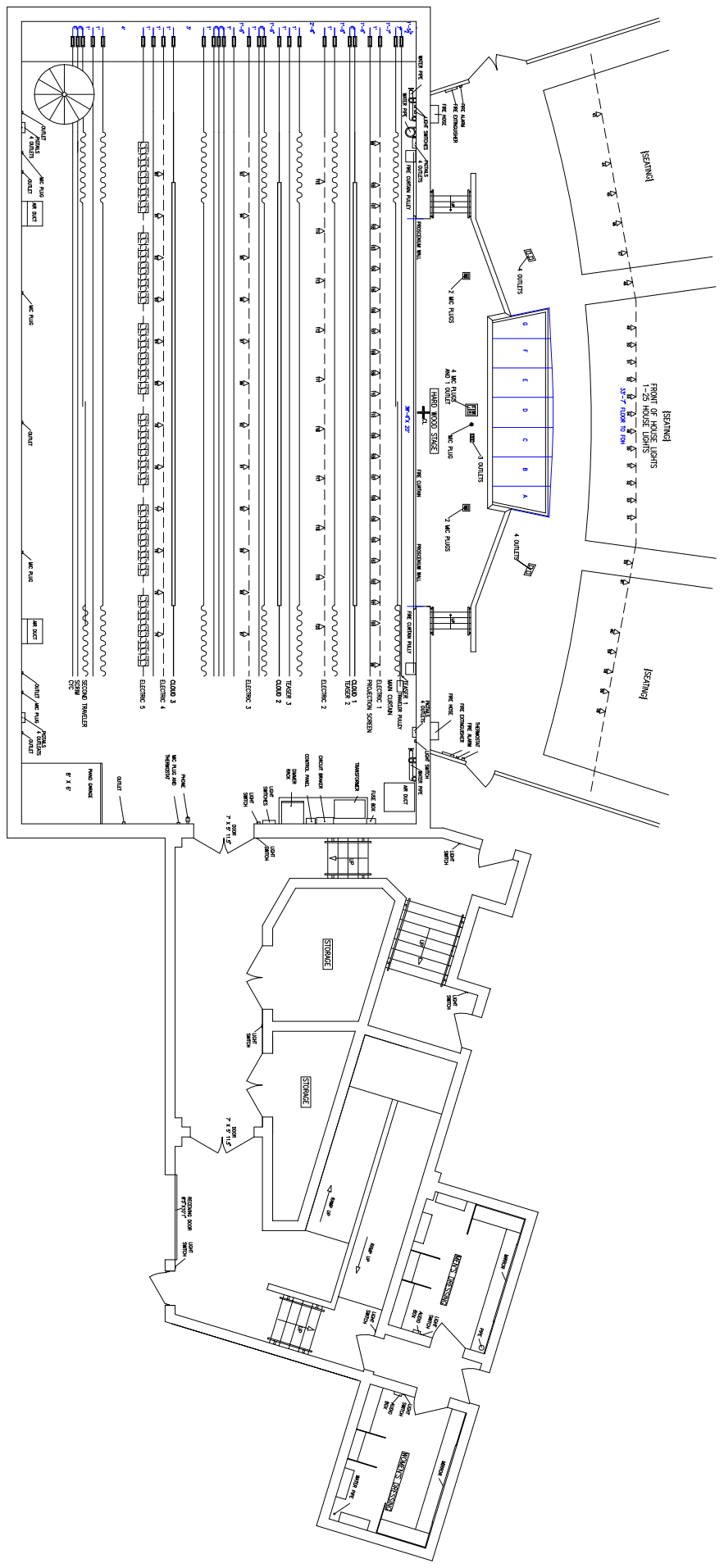
Category: Voyager

There are some damages to the rigging system. If you get a chance to look at them, you'll see the damages. The extent of the damage is currently unknown by KCACTF staff, but is believed to be known by the managers of this facilities. This issue should be fully explored by any parties assigned to this space.

Line Plot:

- 1 Main Teaser
- 2 Act Curtain
- 3 1st Electric
- 4 Screen
- 5 Acoustic Cloud
- 6 Border
- 7 Legs
- 8 2nd electric
- 9 Legs
- 10 Border
- 11 Acoustic cloud
- 12 Legs
- 13 Blank
- 14 3rd Electric
- 15 Blank
- 16 Blank
- 17 Border
- 18 Legs
- 19 Acoustic cloud
- 20 4th electric
- 21 Blank
- 22 Blank
- 23 5th Electric
- 24 Traveler and Legs
- 25 Blank
- 26 Traveler
- 27 Scrim
- 28 Cyc

Circuit Label	Dimmer		Circuit Label	Dimmer		Circuit Label	Dimmer
1	1001		45	20		83	80
2	102		46	21		84	81
3	103		47	22		85	82
4	104		48	23		86	83
5	105		49	24		87	59
6	106		50	25		88	60
7	107		51	26		89	61
8	108		52	27		90	62
9	109		53	28		91	63
10	110		54	29		92	64
11	111		55	30		93	65
12	112		56	31		94	66
13	113		57	32		95	67
14	114		58	33		96	68
15	115		59	34		97	69
16	116		60	35		98	70
17	117		61	36		99	37
18	118		62	84		100	38
25	119		63	85		101	39
26	1		64	86		102	40
27	2		65	87		103	41
28	3		66	88		104	42
29	4		67	89		105	43
30	5		68	90		106	44
31	6		69	91		107	45
32	7		70	92		108	46
33	8		71	93		109	47
34	9		72	94		110	48
35	10		73	95		111	49
36	11		74	71		112	50
37	12		75	72		113	51
38	13		76	73		114	52
39	14		77	74		115	53
40	15		78	75		116	54
41	16		79	76		117	55
42	17		80	77		118	56
43	18		81	78		119	57
44	19		82	79		120	58



MONTICHRISTIE REGIONAL VOCATIONAL TECHNICAL SCHOOL
 FITCHBURG

DRAWING TITLE: MONTY TECH AUDITORIUM

DRAWN BY: XEJ97X 00UJ92L2

CHECKED BY: BMA

SCALE: .125 = 1'

TRACED BY: 77A

APPROVED BY: BMA

DATE: 1/13/2006

SECTION #

SHEET: 1 / 3

